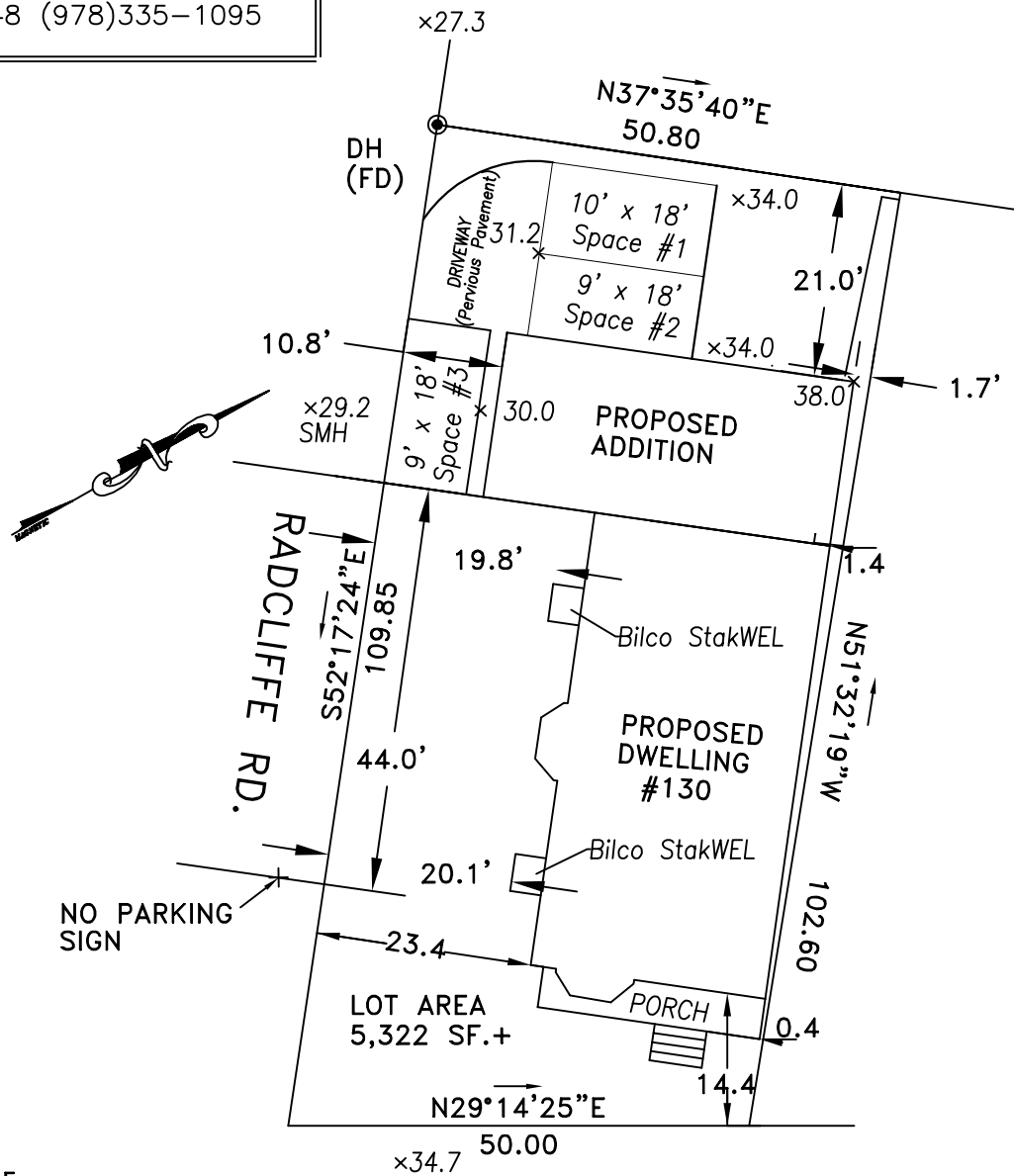


**C.L.G. ASSOCIATES**

Engineers – Surveyors

3 BOSTON ST. SALEM, MA 01970

TEL:(978) 744-0748 (978)335-1095



ZONE /RB  
 F = 15'  
 S = 10'  
 R = 20'

**SUMMARY OF AREAS**

LOT AREA 5322 S.F.  
 EXISTING HOUSE 1498 S.F.  
 EXISTING PERVIOUS 3147 S.F. (59%)  
 EXISTING LANDSCAPE 3147 S.F. (59%)  
 EXISTING IMPERVIOUS PAVEMENT 677 S.F. (13%)

PROPOSED HOUSE 2085 S.F.  
 PROPOSED PERVIOUS 3237 S.F. (61%)  
 PROPOSED LANDSCAPE 2475 S.F. (47%)  
 PROPOSED PERVIOUS PAVEMENT 762 S.F. (14%)

I HEREBY CERTIFY THAT THE  
 EXISTING STRUCTURE SHOWN HEREON  
 WAS LOCATED BY INSTRUMENT SURVEY  
 AND BY PLANS AND DEEDS OF RECORD .

WILLIAM R. D'ENTREMONT P.L.S.

WALNUT ST.

**REFERENCES**

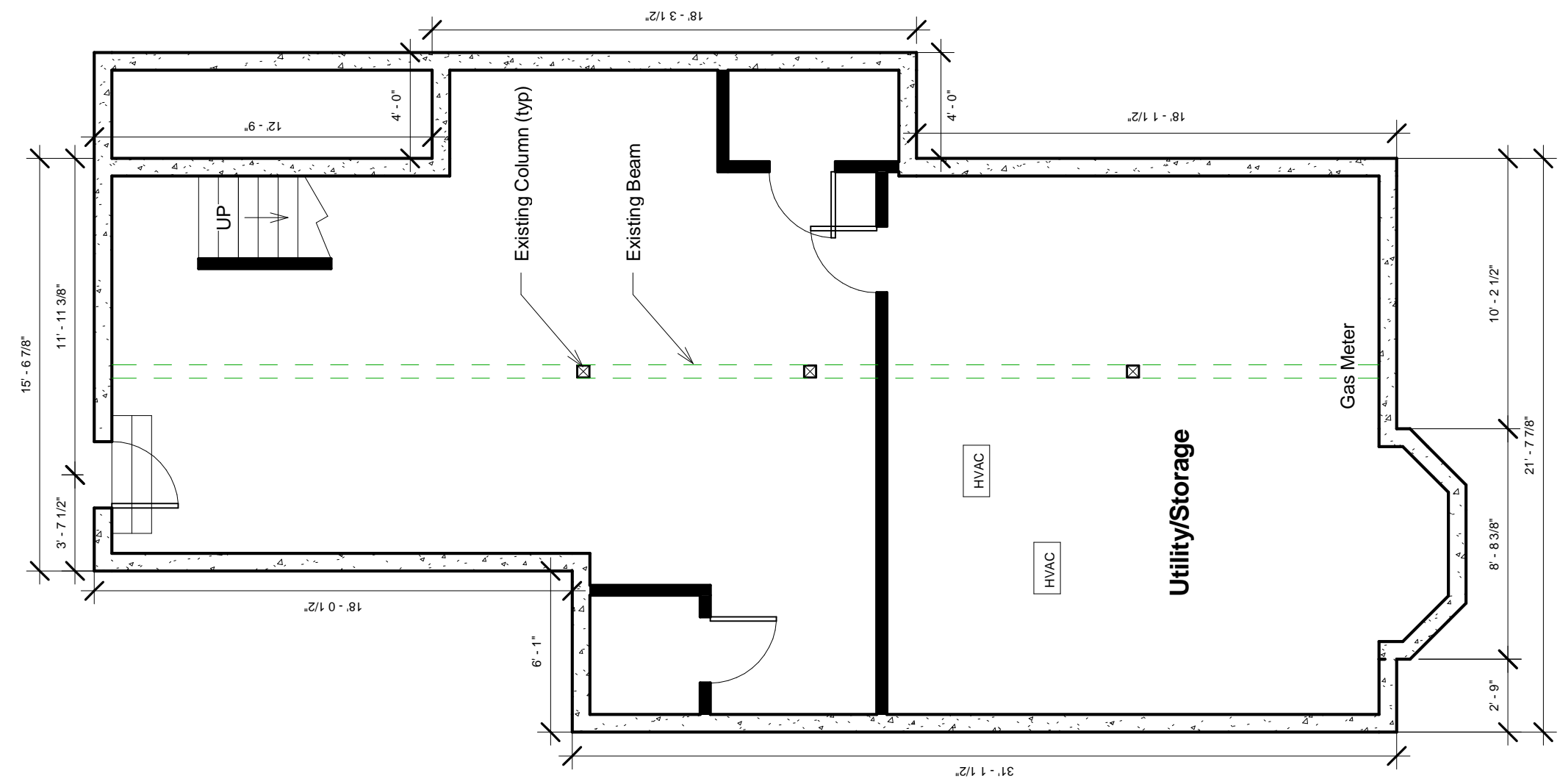
BK 29757 PG 463  
 PLN#945 OF 2013  
 MBLU 71/E/19//

PROPOSED PLOT PLAN  
 in  
 SOMERVILLE, MA  
 for  
 GARRETT CONST.  
 130 WALNUT ST.

SCALE: 1"=20' DATE:8/16/17

Basement SQFT = 1046 Gross

**C** atenacci  
**D** esign  
 A Design Build Company  
 487 Oak Hill Ave Attleboro Ma 02703 (508) 208 - 6622 (508) 222 - 9090 fax



**Garrett Construction**  
 130 Walnut St  
 Somerville, Ma

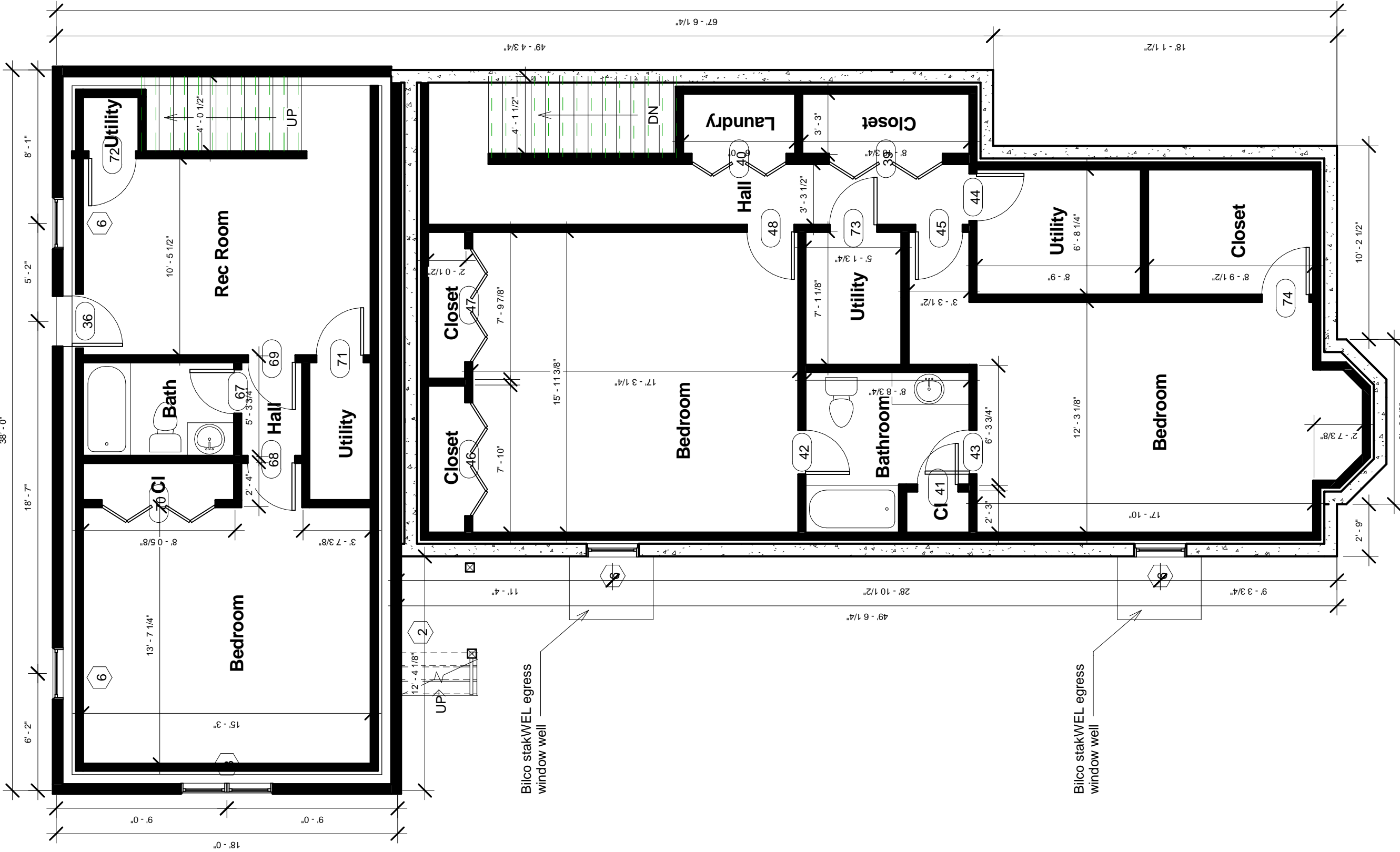
**Basement Plan Existing**

No.	Description	Date

Drawn By: Author  
 Check By: Checker  
 Project #: 2015-12  
 Scale 3/16" = 1'-0"

**A001-E**

Basement SQFT = 1600 Gross  
 Basement SQFT = 1222 Net



**Garrett Construction**  
 130 Walnut St  
 Somerville, Ma

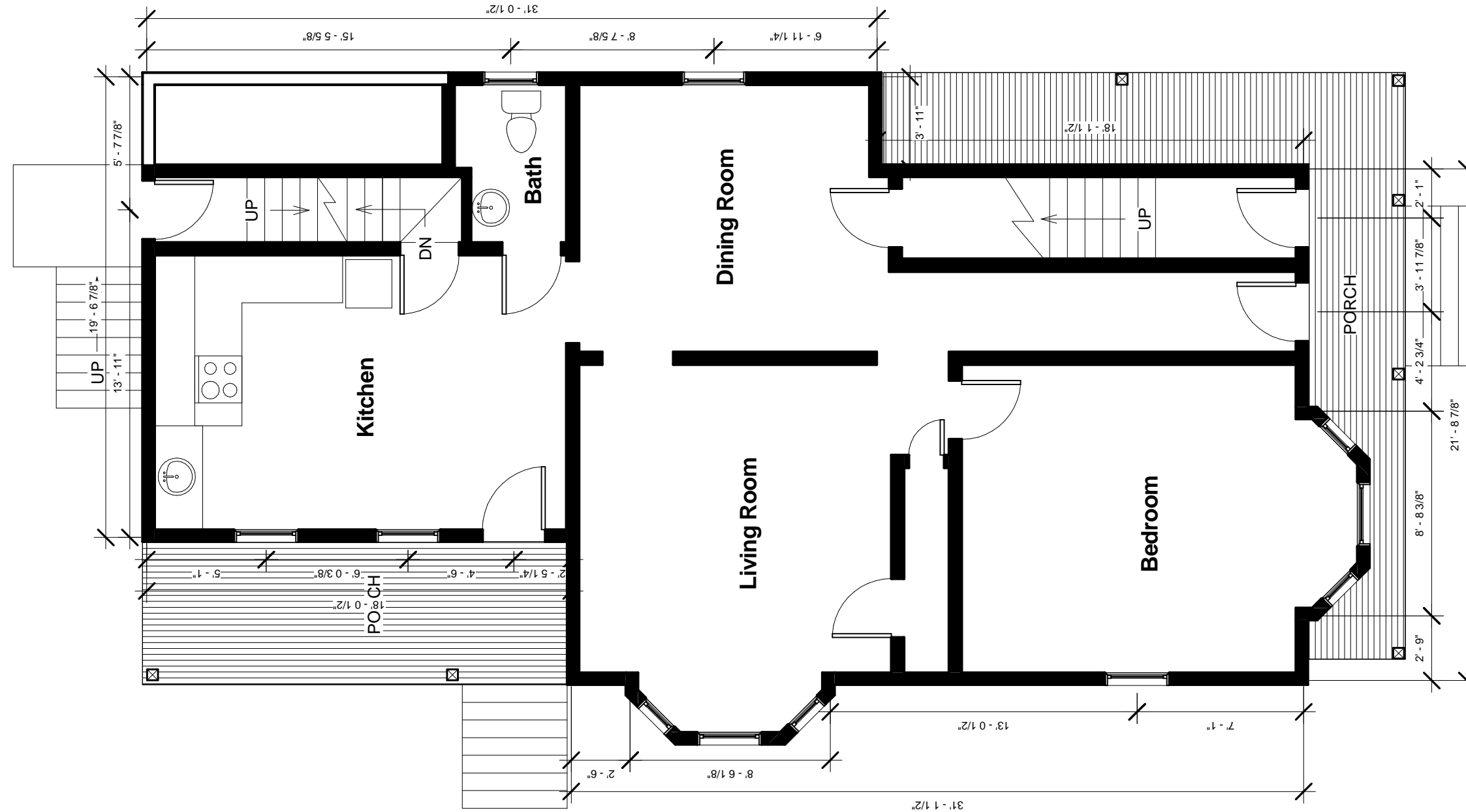
Basement Plan Proposed

No.	Description	Date
Drawn By: Author		
Check By: Checker		
Project #: 2015-12		
Scale	3/16" = 1'-0"	
A001-P		

1ST SQFT = 1099 Gross

**C**atenacci  
**D**esign

A Design Build Company  
487 Oak Hill Ave Attleboro Ma 02703 (508) 208 - 6622 (508) 222 - 9090 fax



**Garrett Construction**  
130 Walnut St  
Somerville, Ma

First Floor Plan Existing

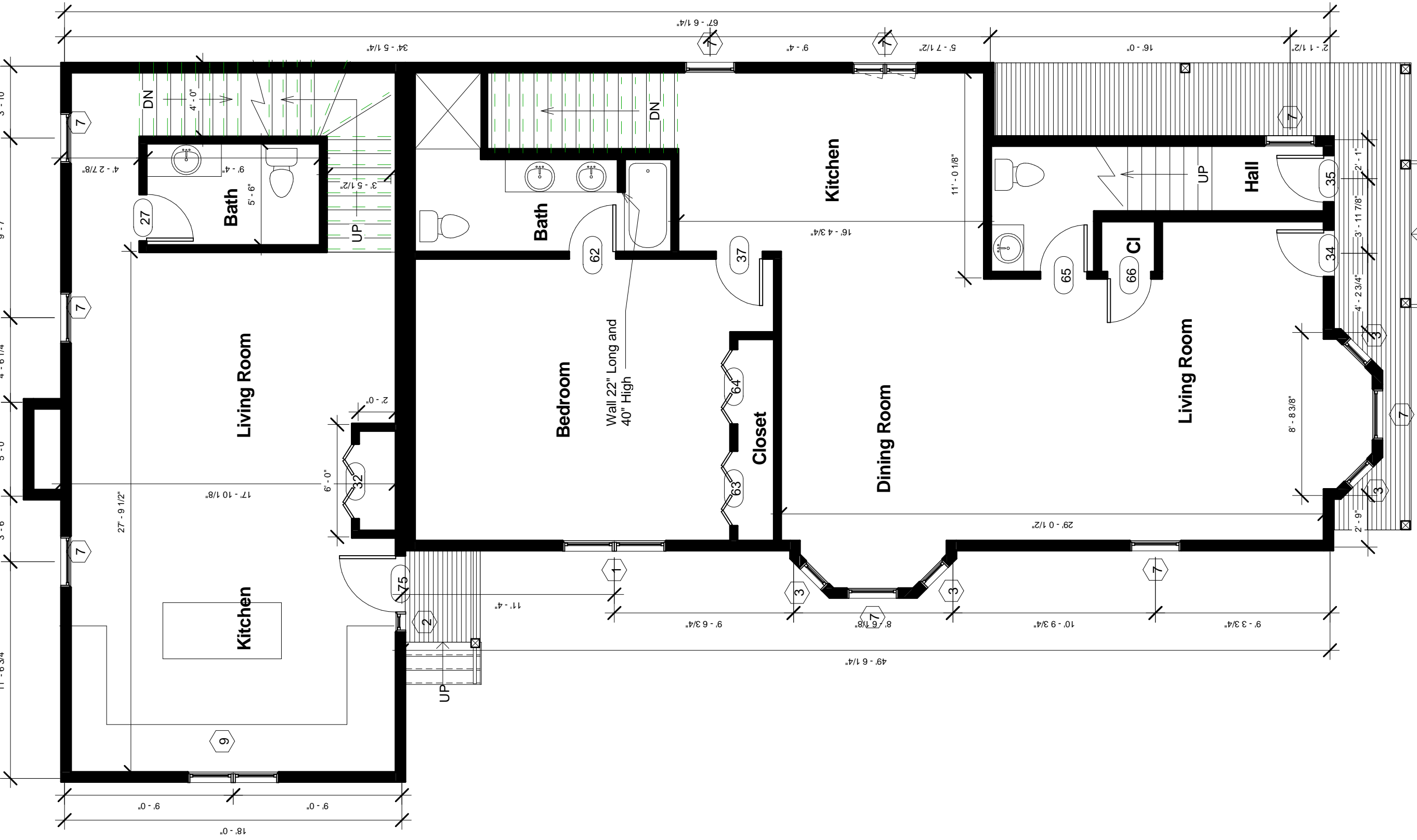
No.	Description	Date

Drawn By: Author  
Check By: Checker  
Project #: 2015-12  
Scale 3/16" = 1'-0"

**A101-E**

1ST Floor SQFT = 1851 Gross  
 1ST Floor SQFT = 1597 Net

**C** atenacci  
**D** esign  
 A Design Build Company  
 487 Oak Hill Ave Attleboro Ma 02703 (508) 208 - 6622 (508) 222 - 9090 fax



**Garrett Construction**  
 130 Walnut St  
 Somerville, Ma

First Floor Plan Proposed

No.	Description	Date

Drawn By: Author  
 Check By: Checker  
 Project #: 2015-12  
 Scal 3/16" = 1'-0"

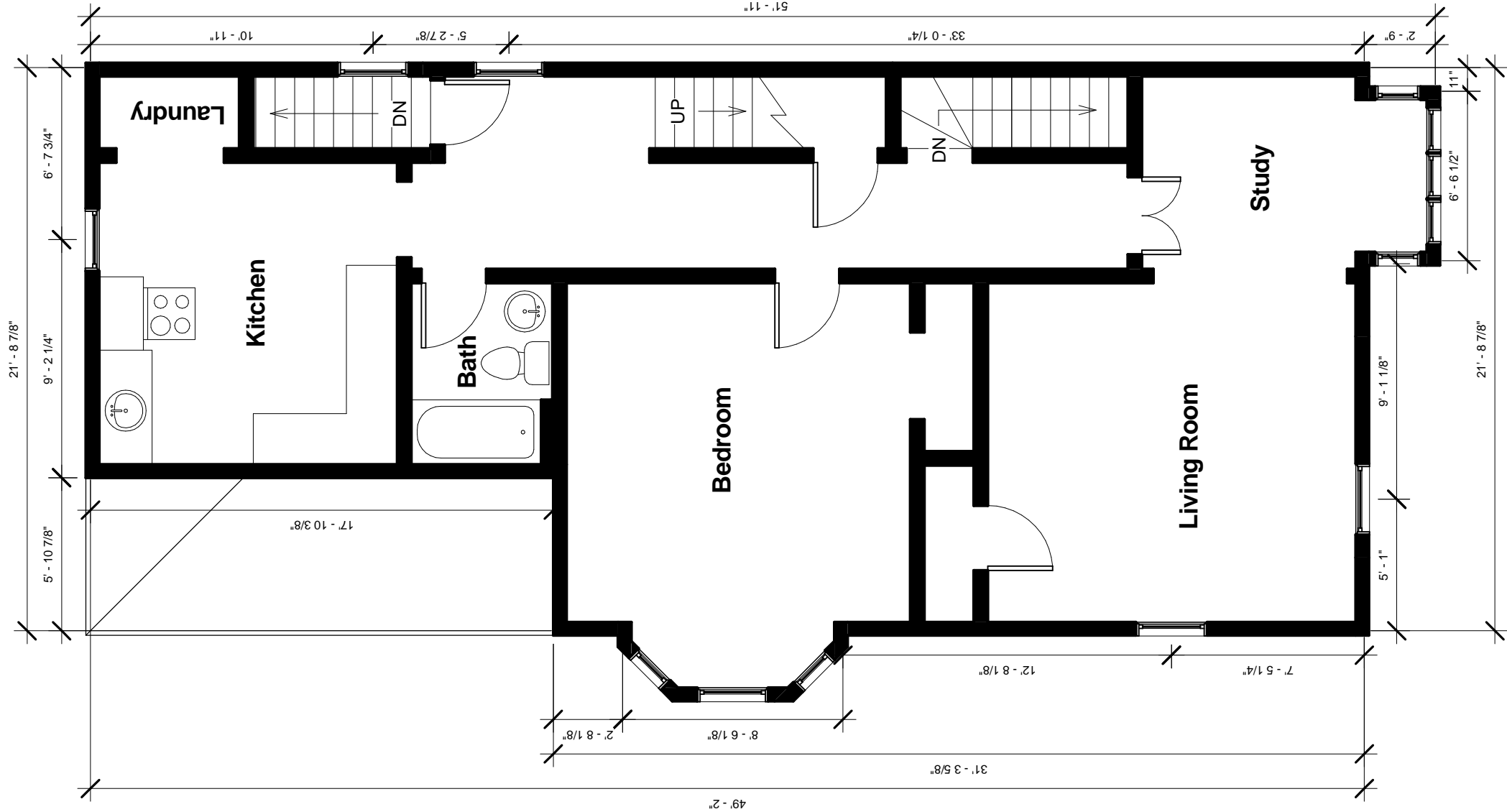
**A101-P**

2ND SQFT = 1027 Gross

# C atenacci D esign

A Design Build Company

487 Oak Hill Ave Attleboro Ma 02703 (508) 208 - 6622 (508) 222 - 9090 fax



**Garrett Construction**  
 130 Walnut St  
 Somerville, Ma

Second Floor Plan Existing

No.	Description	Date

Drawn By: Author

Check By: Checker

Project #: 2015-12

Scale 3/16" = 1'-0"

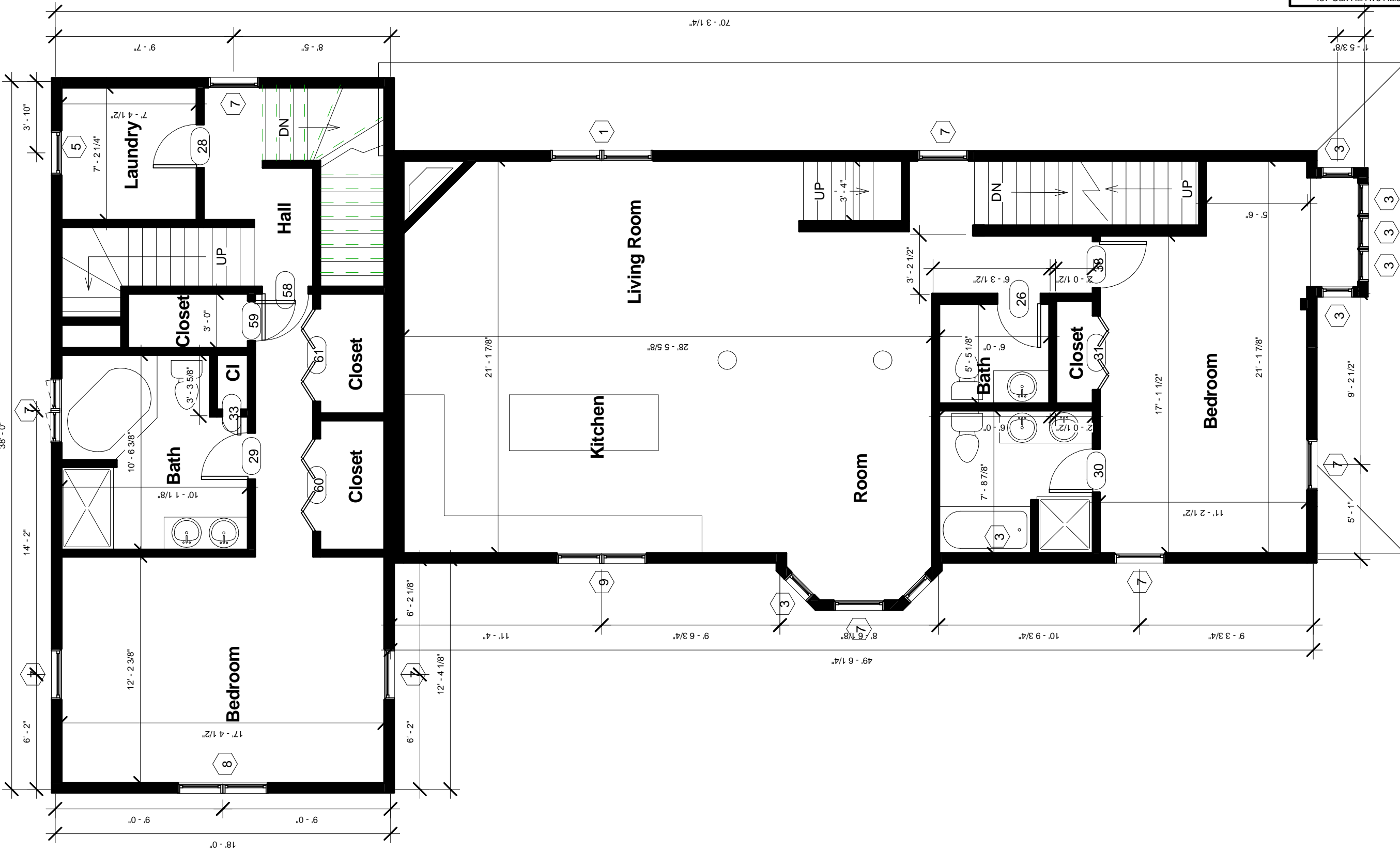
A201-E

2ND Floor SQFT = 1728 Gross  
 2ND Floor SQFT = 1418 Net

**C** atenacci  
**D** esign

A Design Build Company

487 Oak Hill Ave Attleboro Ma 02703 (508) 208 - 6622 (508) 222 - 9090 fax



**Garrett Construction**  
 130 Walnut St  
 Somerville, Ma

Second Floor Plan Proposed

No.	Description	Date

Drawn By: Author  
 Check By: Checker  
 Project #: 2015-12  
 Scal 3/16" = 1'-0"

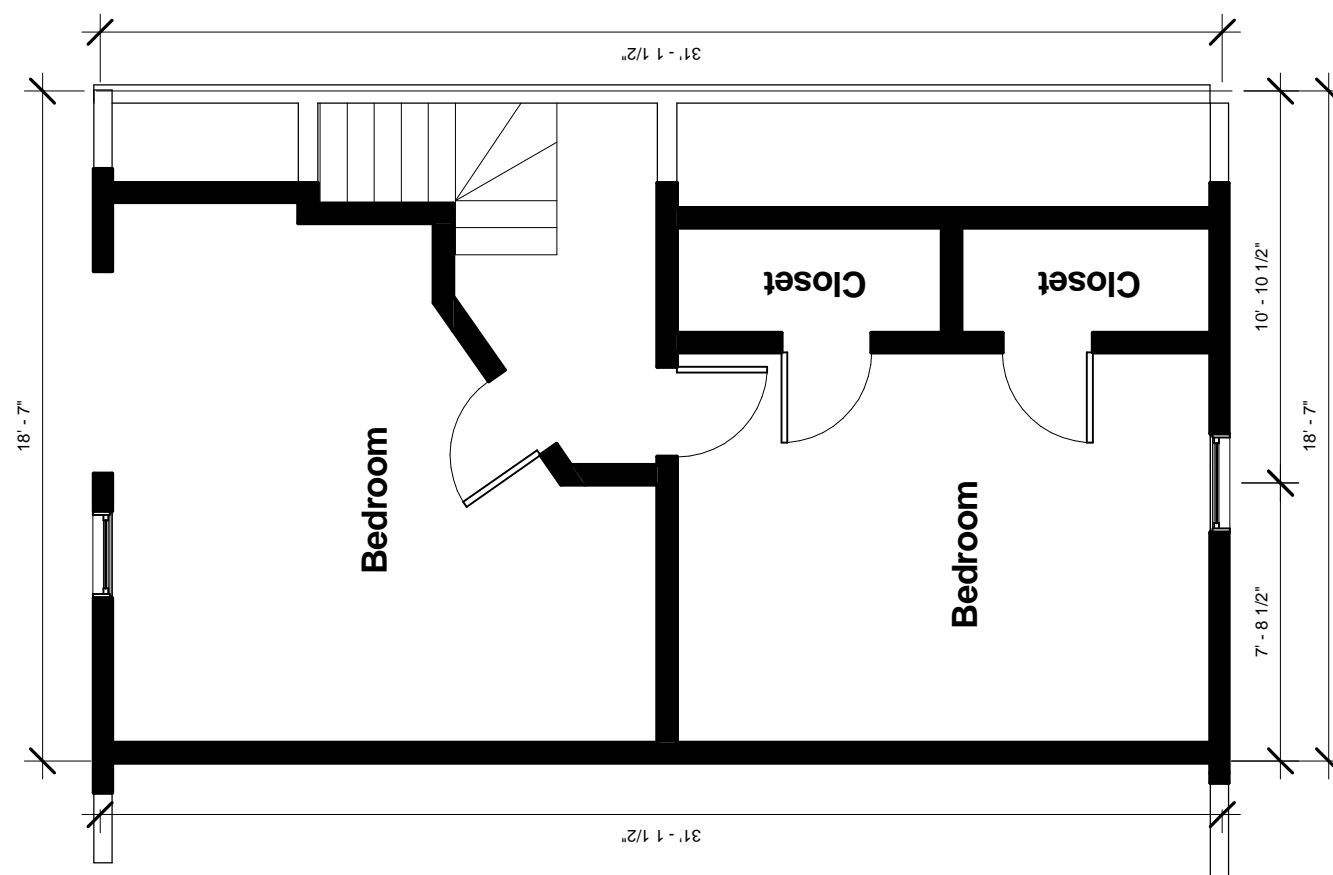
**A201-P**

3RD SQFT = 522 Gross

**C**atenacci  
**D**esign

A Design Build Company

487 Oak Hill Ave Attleboro Ma 02703 (508) 208 - 6622 (508) 222 - 9090 fax



Garrett Construction  
130 Walnut St  
Somerville, Ma

Third Floor Plan Existing

No.	Description	Date

Drawn By: Author

Check By: Checker

Project #: 2015-12

Scale 3/16" = 1'-0"

**A301-E**

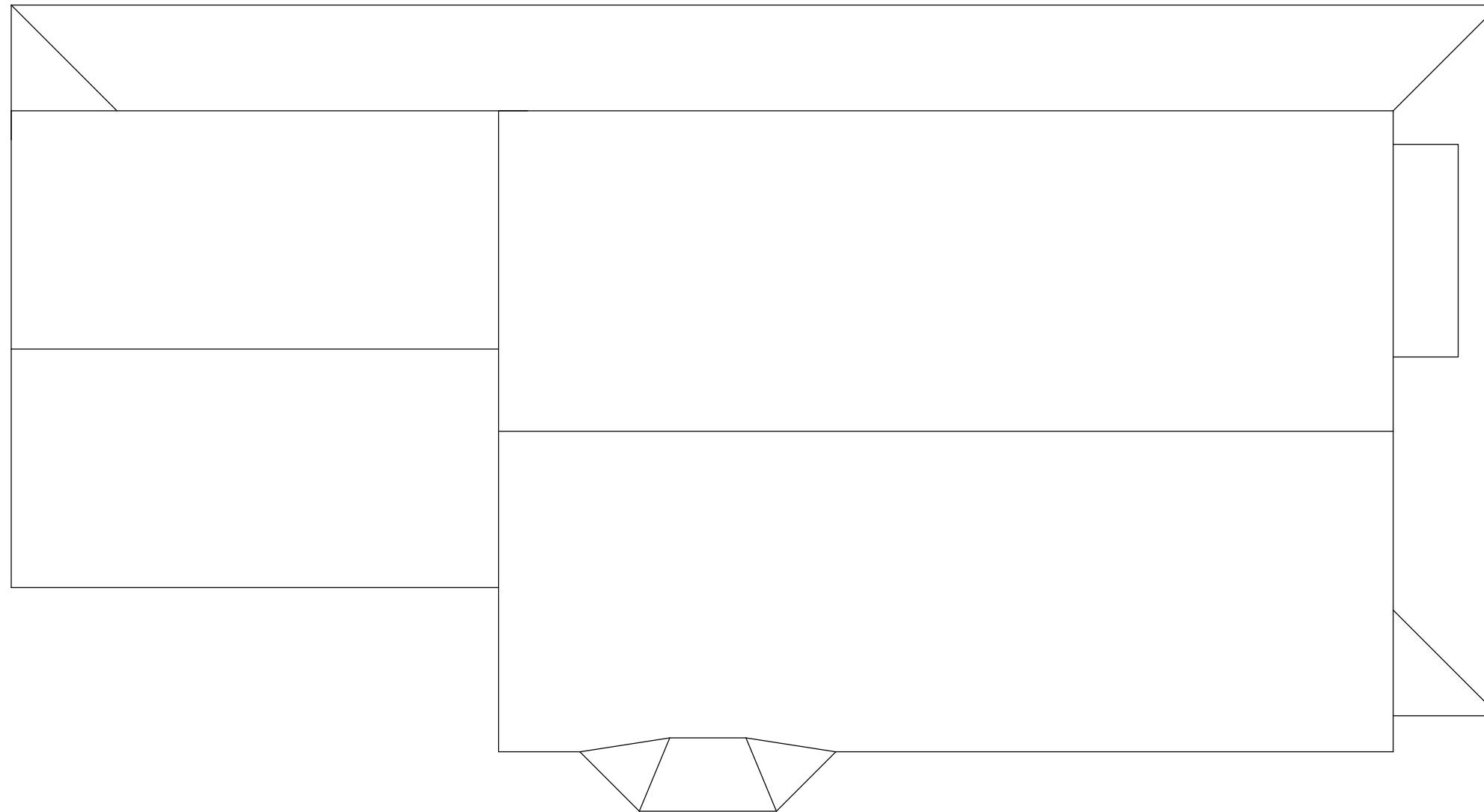




# C atenacci D esign

A Design Build Company

487 Oak Hill Ave Attleboro Ma 02703 (508) 208 - 6622 (508) 222 - 9090 fax



**Garrett Construction**  
130 Walnut St  
Somerville, Ma

Roof Plan Existing

No.	Description	Date

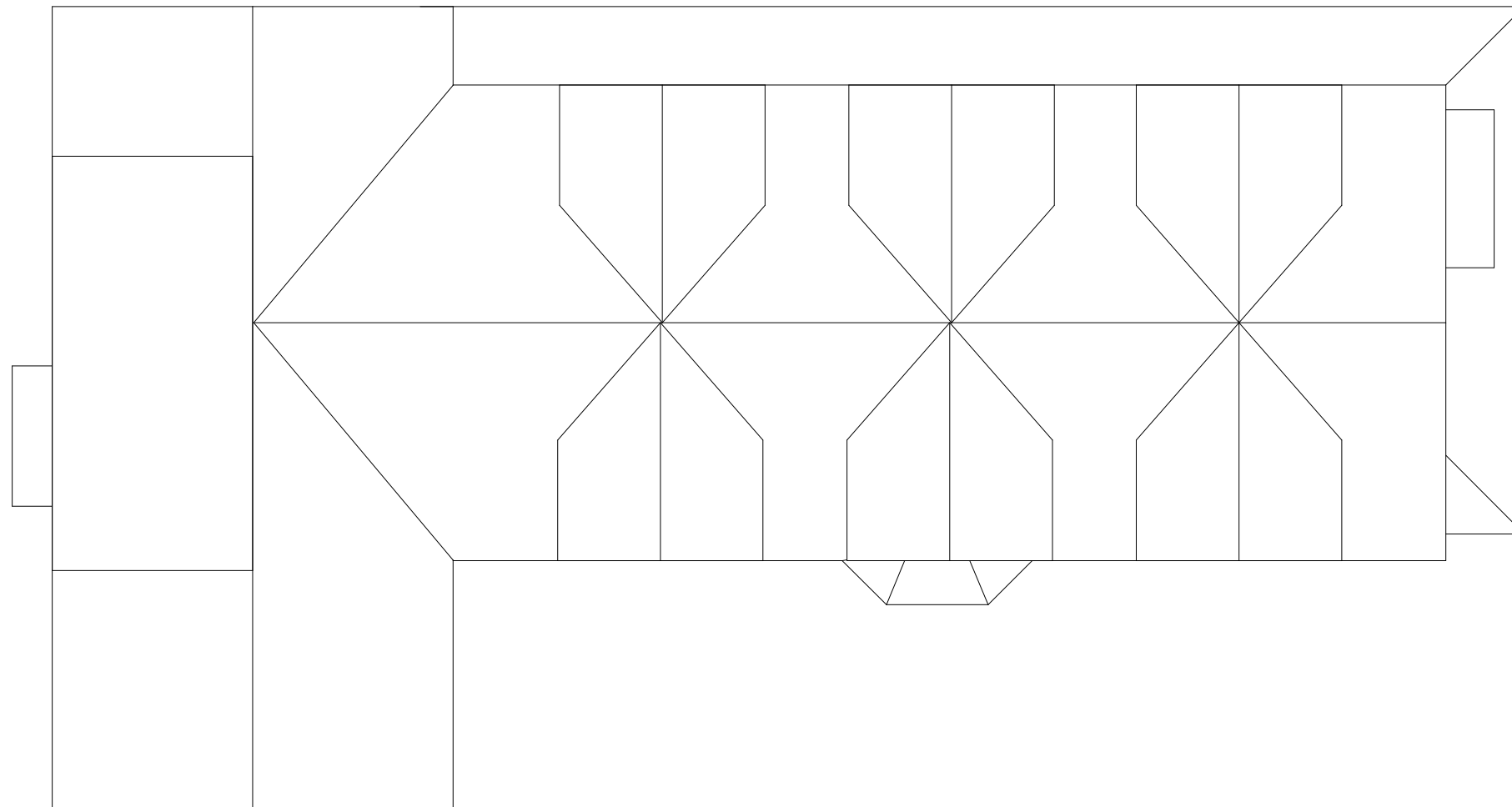
Drawn By: Author  
Check By: Checker  
Project #: 2015-12  
Scale 3/16" = 1'-0"

**A401-E**

# C atenacci D esign

A Design Build Company

487 Oak Hill Ave Attleboro Ma 02703 (508) 208 - 6622 (508) 222 - 9090 fax



**Garrett Construction**  
130 Walnut St  
Somerville, Ma

**Roof Plan Proposed**

No.	Description	Date

Drawn By: Author

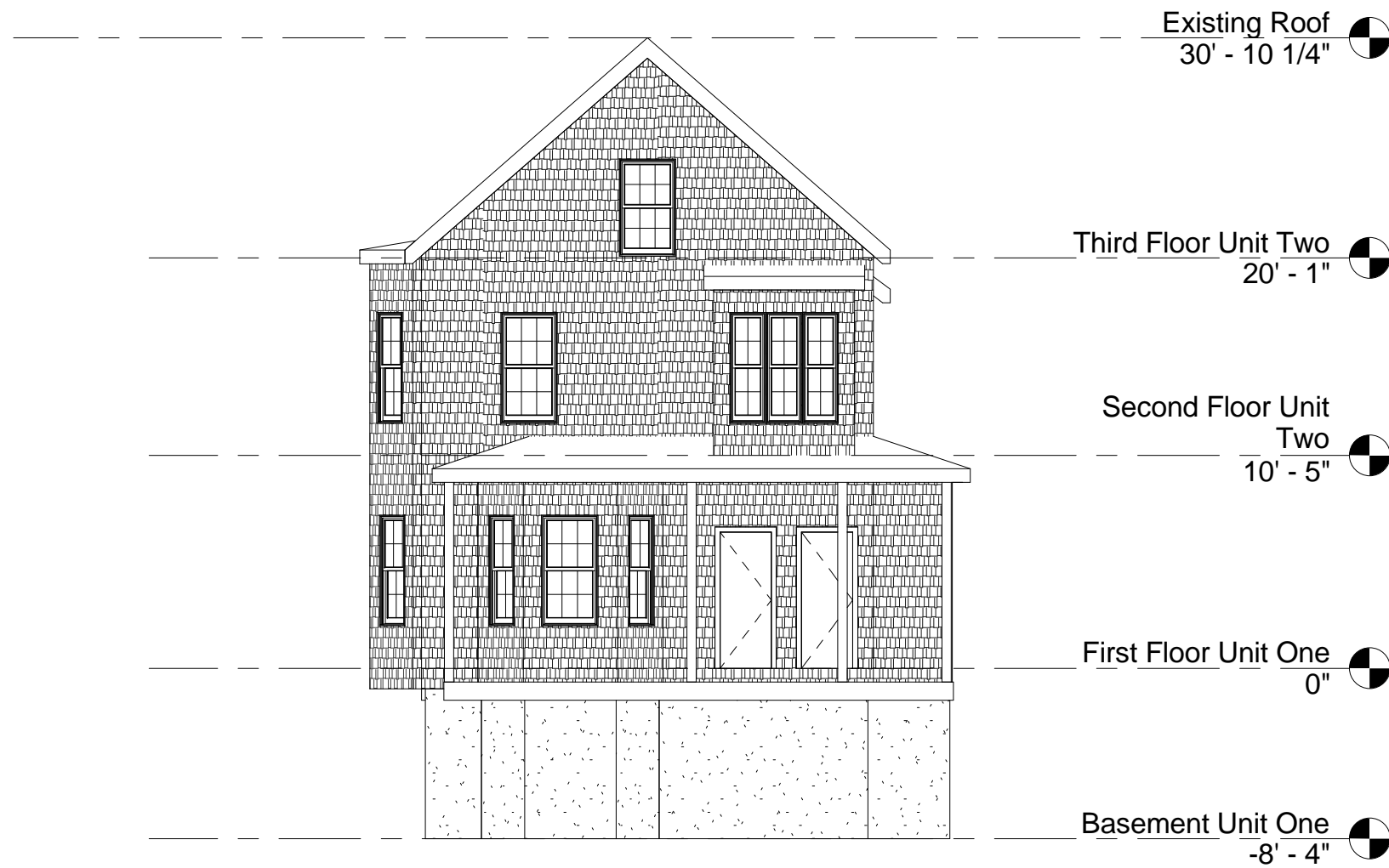
Check By: Checker

Project #: 2015-12

Scale 1/8" = 1'-0"

e

**A401-P**



**Garrett Construction**  
130 Walnut St  
Somerville, Ma

North Elevation Existing

No.	Description	Date

Drawn By: Author

Check By: Checker

Project #: 2015-12

Scale 1/8" = 1'-0"

e

**A501-E**

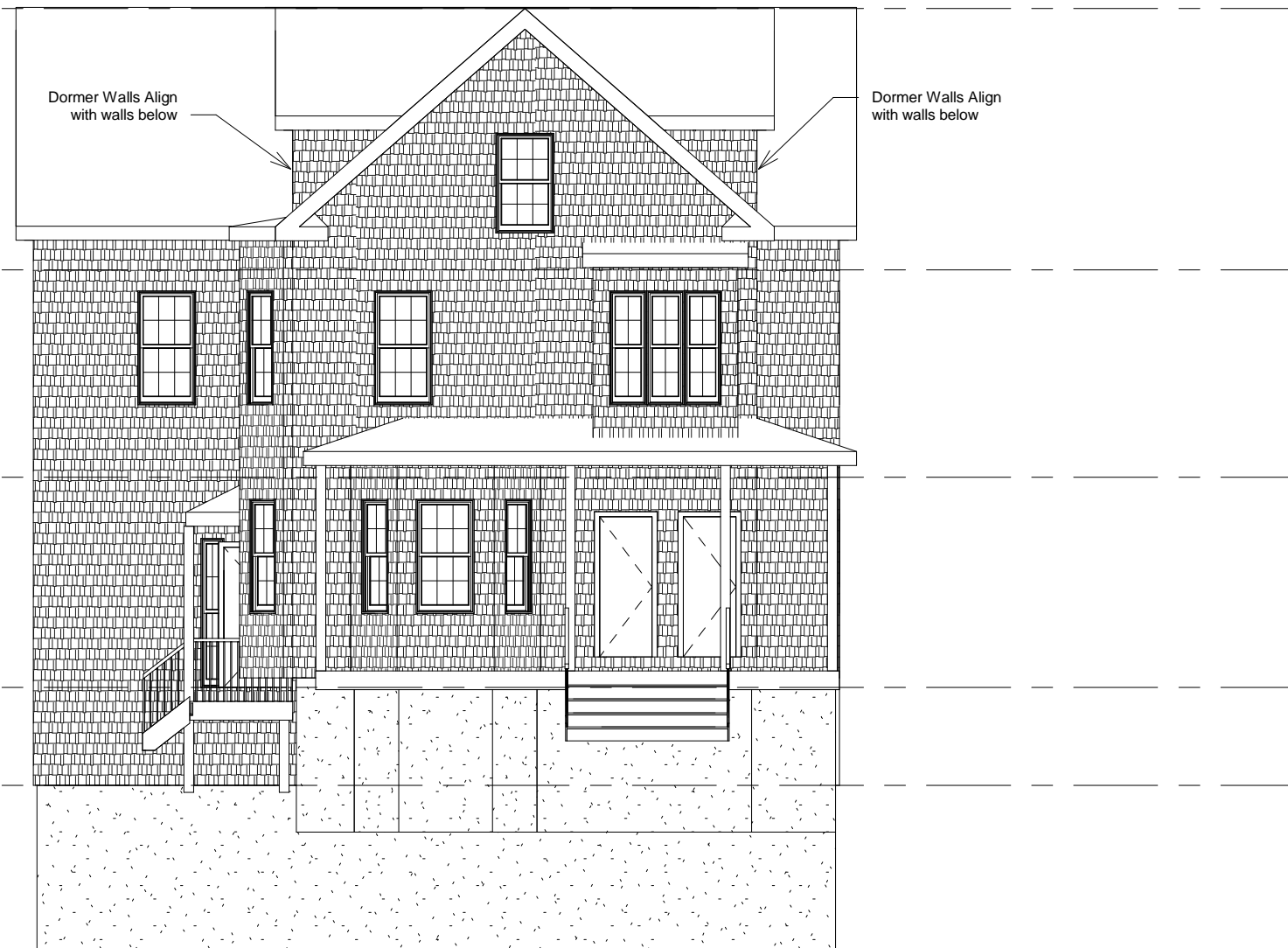
Roof New Main  
30' - 10 1/4"

Third Floor  
TownHouse  
18' - 5"

Second Floor  
TownHouse  
8' - 6 5/8"

First Floor  
TownHouse  
-1' - 5 3/8"  
Foundation New  
TownHouse  
-6' - 1 3/8"

B.O. Footing  
Proposed  
-14' - 11 3/8"



Garrett Construction  
130 Walnut St  
Somerville, Ma

North Elevation Proposed

No.	Description	Date

Drawn By: Author

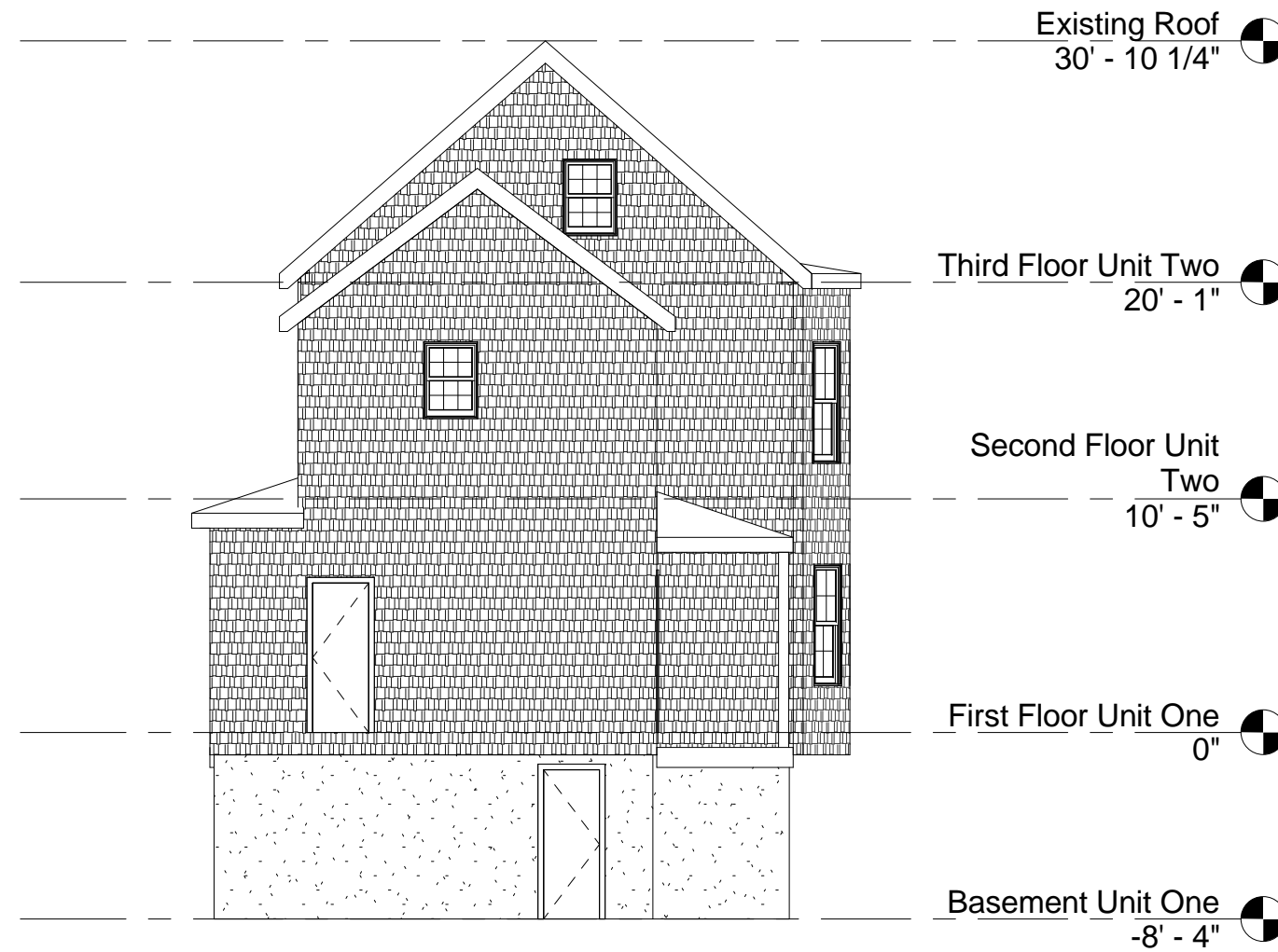
Check By: Checker

Project #: 2015-12

Scale 1/8" = 1'-0"

e

A501-P



**Garrett Construction**

130 Walnut St  
Somerville, Ma

South Elevation Existing

No.	Description	Date

Drawn By: Author

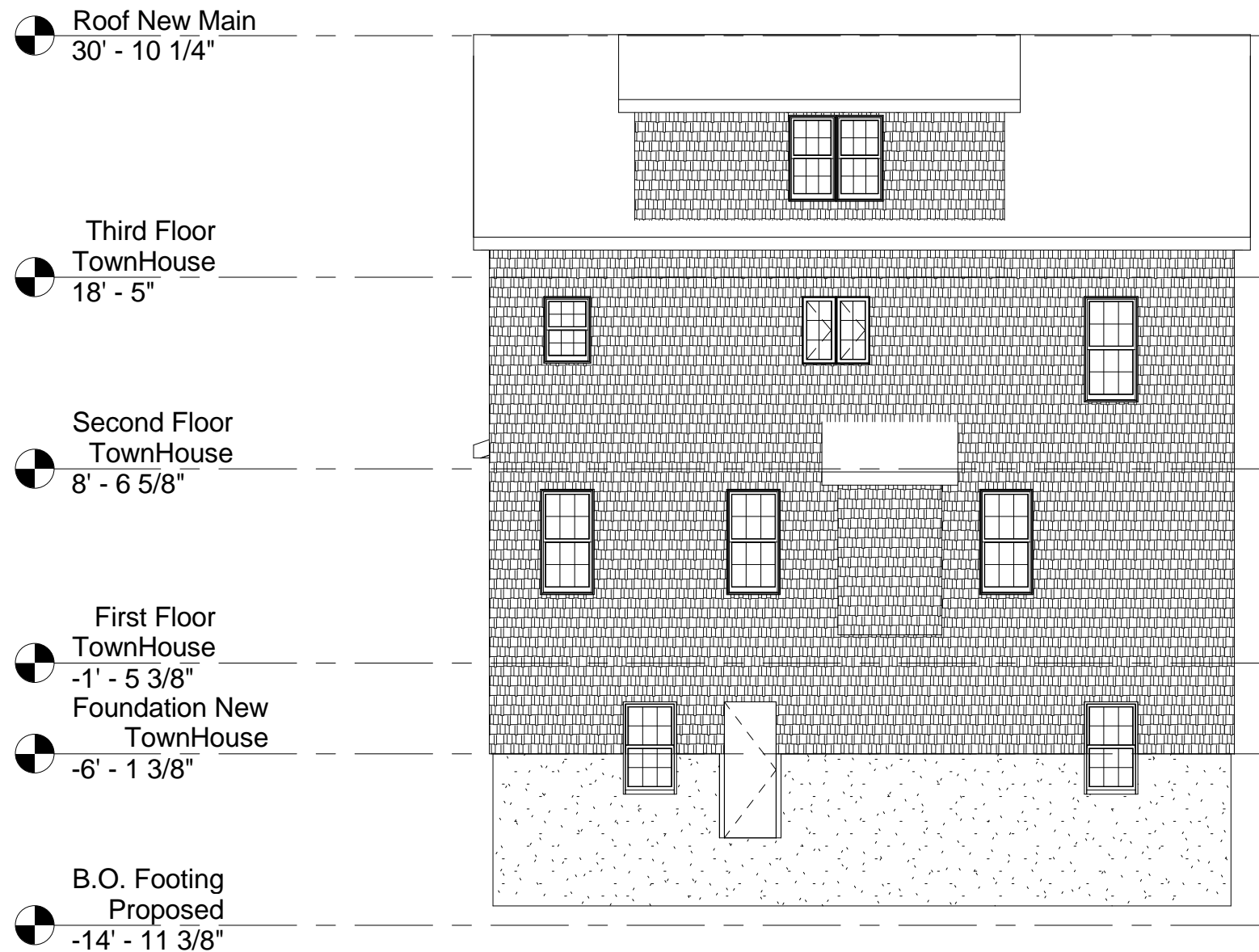
Check By: Checker

Project #: 2015-12

Scale 1/8" = 1'-0"

e

**A502-E**



**Garrett Construction**  
130 Walnut St  
Somerville, Ma

South Elevation Proposed

No.	Description	Date

Drawn By: Author

Check By: Checker

Project #: 2015-12

Scale 1/8" = 1'-0"

**A502-P**



Garrett Construction

130 Walnut St  
Somerville, Ma

East Elevation Existing

No.	Description	Date

Drawn By: Author

Check By: Checker

Project #: 2015-12

Scale 1/8" = 1'-0"

e

**A503-E**



Roof New Main  
30' - 10 1/4"

Dormer Walls Align  
with walls below

Third Floor  
TownHouse  
18' - 5"

Second Floor  
TownHouse  
8' - 6 5/8"

First Floor  
TownHouse  
-1' - 5 3/8"  
Foundation New  
TownHouse  
-6' - 1 3/8"

B.O. Footing  
Proposed  
-14' - 11 3/8"



**Garrett Construction**  
130 Walnut St  
Somerville, Ma

East Elevation Proposed

No.	Description	Date

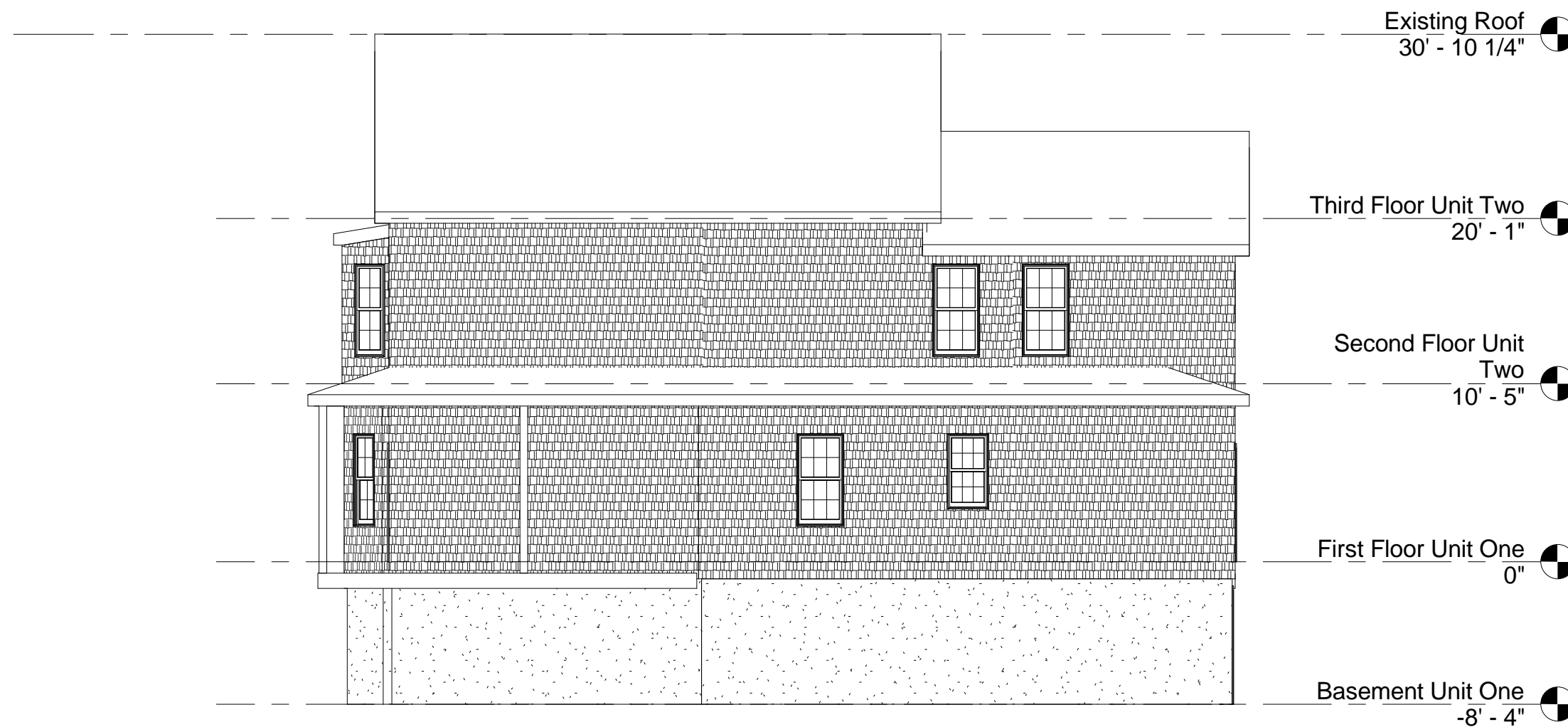
Drawn By: Author

Check By: Checker

Project #: 2015-12

Scale 1/8" = 1'-0"

e  
**A503-P**



**Garrett Construction**

130 Walnut St  
Somerville, Ma

West Elevation Existing

No.	Description	Date

Drawn By: Author

Check By: Checker

Project #: 2015-12

Scale 1/8" = 1'-0"

e

**A504-E**

# C atenacci D esign

A Design Build Company

487 Oak Hill Ave Attleboro Ma 02703 (508) 208 - 6622 (508) 222 - 9090 fax

Roof New Main  
30' - 10 1/4"

Third Floor  
TownHouse  
18' - 5"

Second Floor  
TownHouse  
8' - 6 5/8"

First Floor  
TownHouse  
-1' - 5 3/8"  
Foundation New  
TownHouse  
-6' - 1 3/8"

B.O. Footing  
Proposed  
-14' - 11 3/8"



Dormer Walls Align  
with walls below

Garrett Construction  
130 Walnut St  
Somerville, Ma

West Elevation Proposed

No.	Description	Date

Drawn By: Author

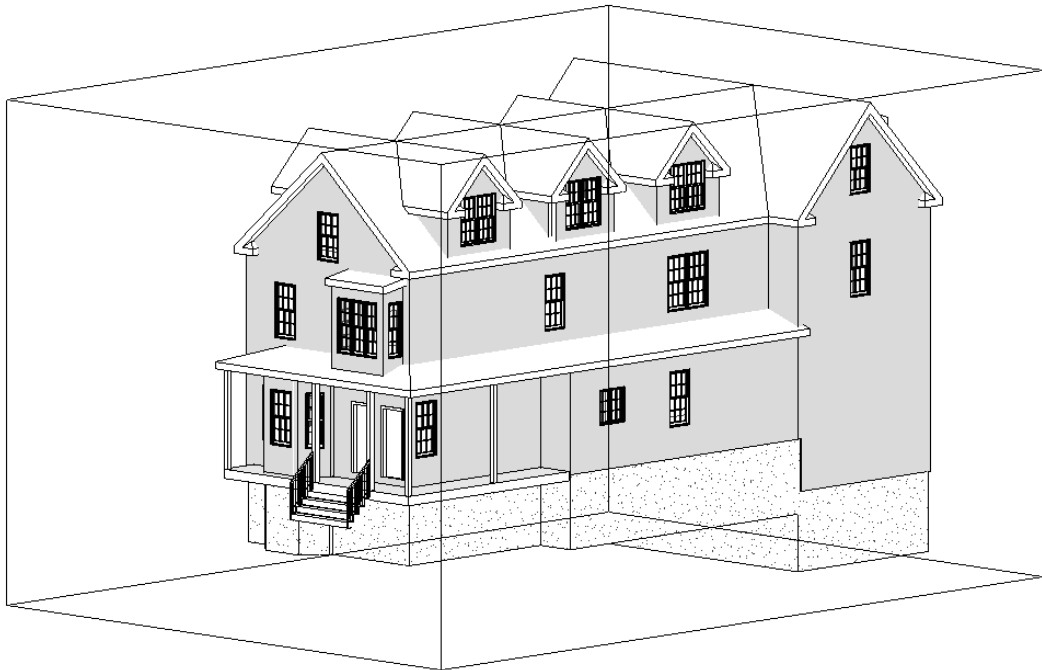
Check By: Checker

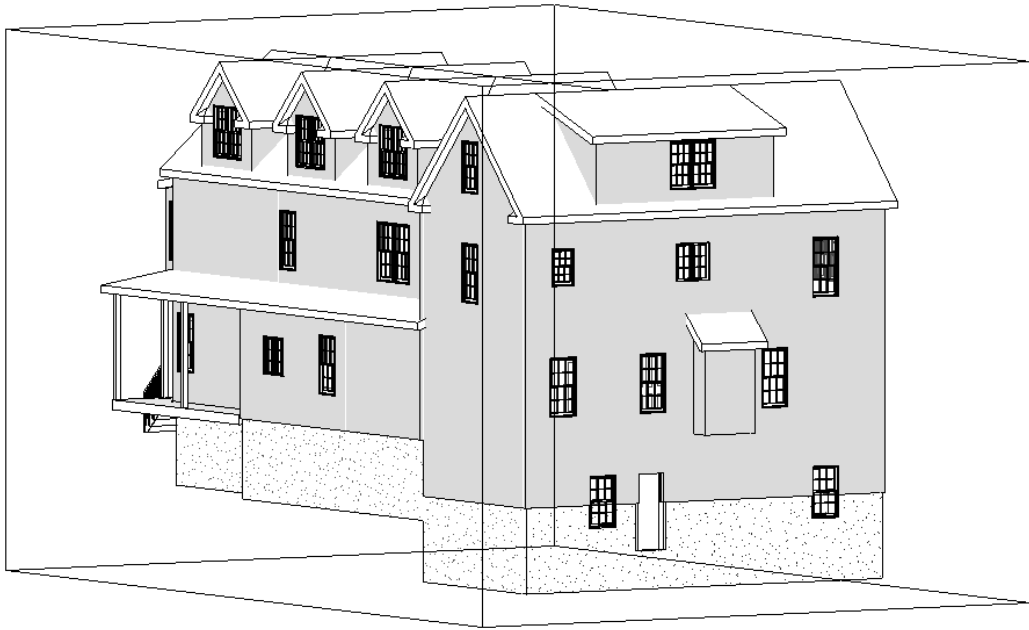
Project #: 2015-12

Scale 1/8" = 1'-0"

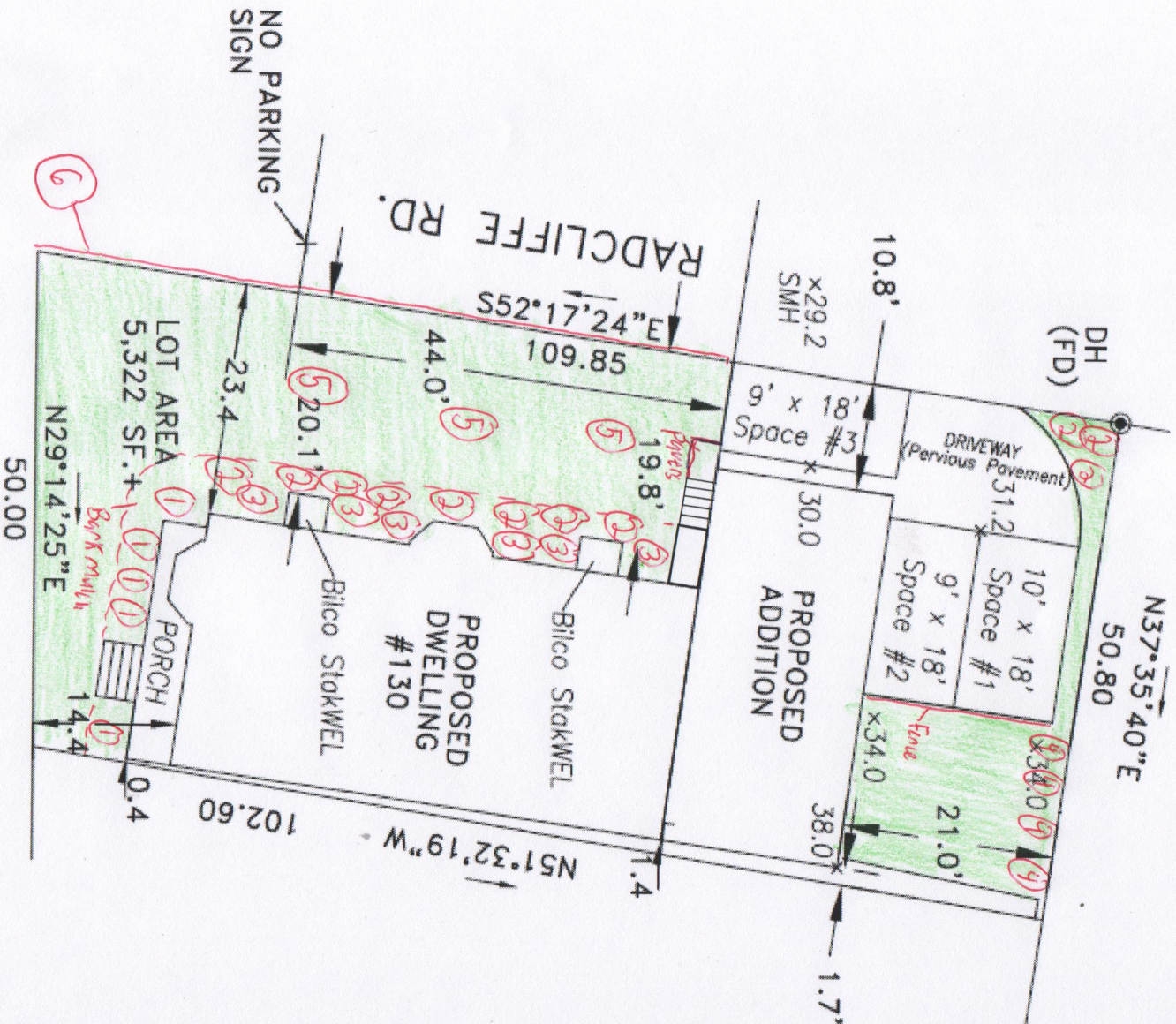
e  
**A504-P**







LANDSCAPING PLAN  
130 WALNUT STREET



Landscaping Legend

1. Japanese Holly
2. PJM Rhododendrum
3. Azalea
4. Arborvitae
5. Koussa Dogwood Tree
6. Techno-Bloc Wall

LANDSCAPING PLAN  
PLANT PHOTOS

---

Japanese Holly



Closeup of the Japanese Holly

Azalea





LANDSCAPING PLAN  
PLANT PHOTOS

---

PJM Rhododendron



LANDSCAPING PLAN  
PLANT PHOTOS

---

Arborvitae



LANDSCAPING PLAN  
PLANT PHOTOS

---

Kousa Dogwood Tree

